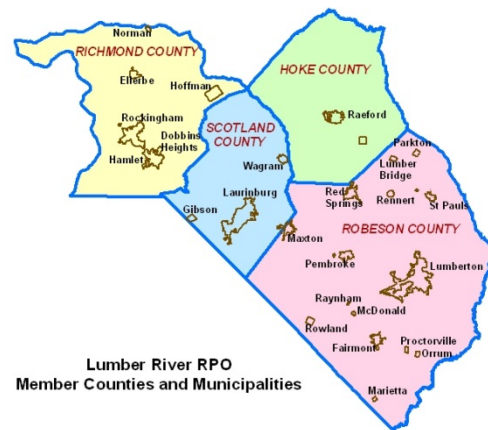


Comprehensive Transportation Planning for Lumberton



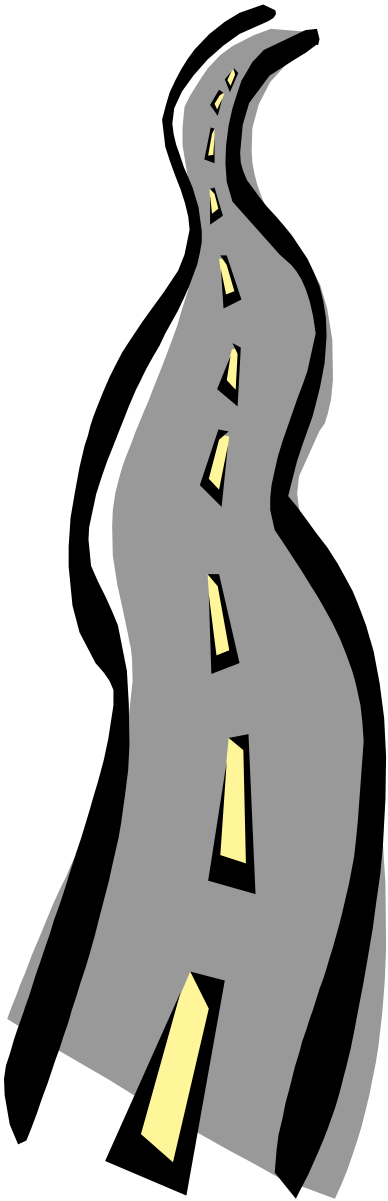
Lumber River RPO
Member Counties and Municipalities



TRANSPORTATION PLANNING BRANCH

June 4, 2014

What is Transportation Planning?



Transportation Planning is the process by which NCDOT, local officials and local planning organizations collaborate to develop a comprehensive transportation plan (CTP) for a specified planning area. CTPs depict recommended improvements to local transportation systems needed to meet existing and future multi-modal travel demands.

North Carolina General Statute

136-66.2 Transportation Planning

Requirements for the development and adoption of Transportation Plans with local jurisdictions:

- ☉ Adopted land development plans within the past five years or in the process of doing so*
- ☉ Any type of plan or policy that expresses a jurisdiction's goals and objectives for land development

** Lumberton is currently updating the land use plan*

Comprehensive Transportation Plan

- ④ *Multimodal*
 - ④ *Highway*
 - ④ *Public Transportation and Rail*
 - ④ *Bicycle*
 - ④ *Pedestrian*
- ④ *Recommendations*
 - ④ *Existing, Needs Improvements,
Recommended (new location)*
- ④ *Highway Categories*
 - ④ *Freeways*
 - ④ *Expressways*
 - ④ *Boulevards*
 - ④ *Other Major/Minor Thoroughfares*

*What are the **Benefits** of having a CTP?*

- Common long range vision for multi-modal facilities between NCDOT, MPOs, RPOs and local governments.
- More detailed project information for NCDOT Programming and Project Development.
- Better integration of transportation planning with land use planning.
- Reduced costs associated with right-of-way and construction activities.
- Minimization of impacts to the natural and human environment.
- Stronger ties to local priorities.
- Documentation that can be used as a guide for future development and transportation decisions.

*A Comprehensive Transportation Plan Does **NOT**...*

- ❶ Make a promise to build roads.*
- ❷ Determine a pinpoint location of new roads.*



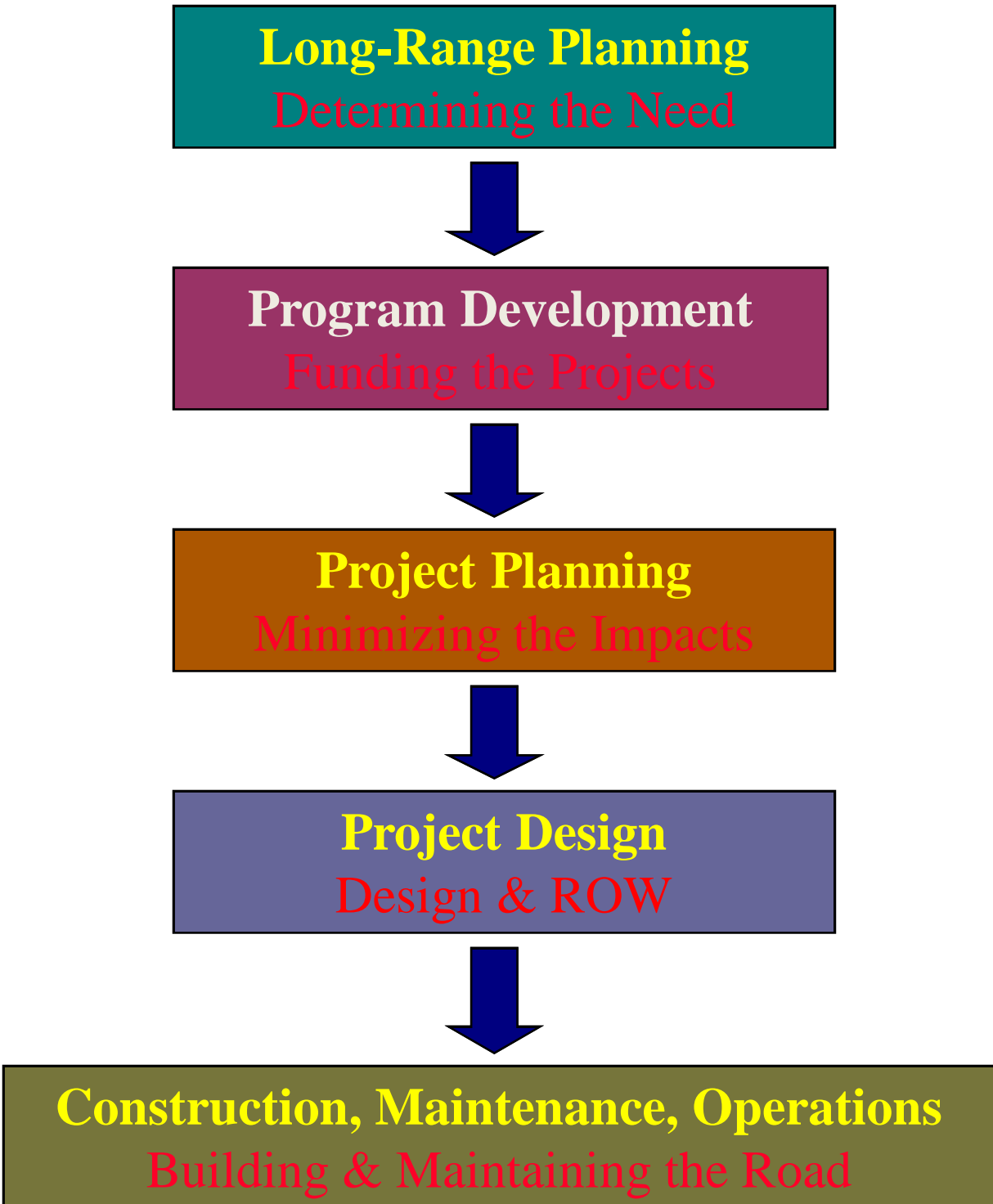
Plan Comparison

**Comprehensive
Transportation Plan
(25-30 Year Plan)**

**TIP
(7 Year Plan)**

	Adopted By NCDOT BOT	Fiscally Constrained	A/Q Conformity Analysis Required	Approximate Plan Horizon
Comprehensive Transportation Plan	Yes	No	No	30 Years
Transportation Improvement Program	Yes	Yes	Yes, for non-attainment areas	7 Years

Project Development Process



Existing Transportation and Land Use Plans

Transportation Plans

*Lumberton Thoroughfare Plan – 1995**

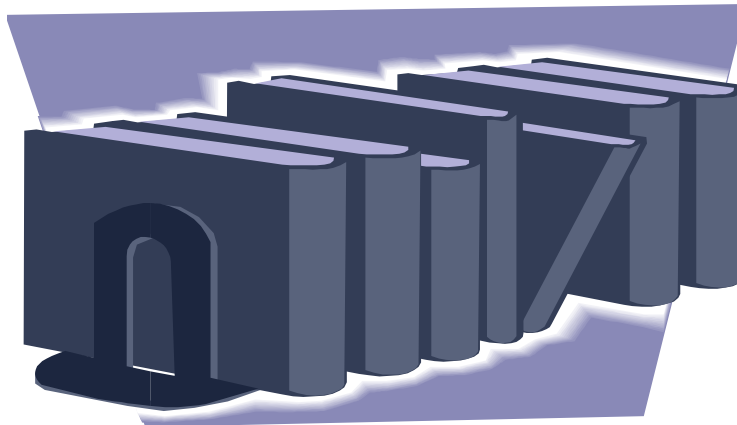
Robeson County CTP – 2011

Land Use Plans

*Lumberton Land Use Plan***

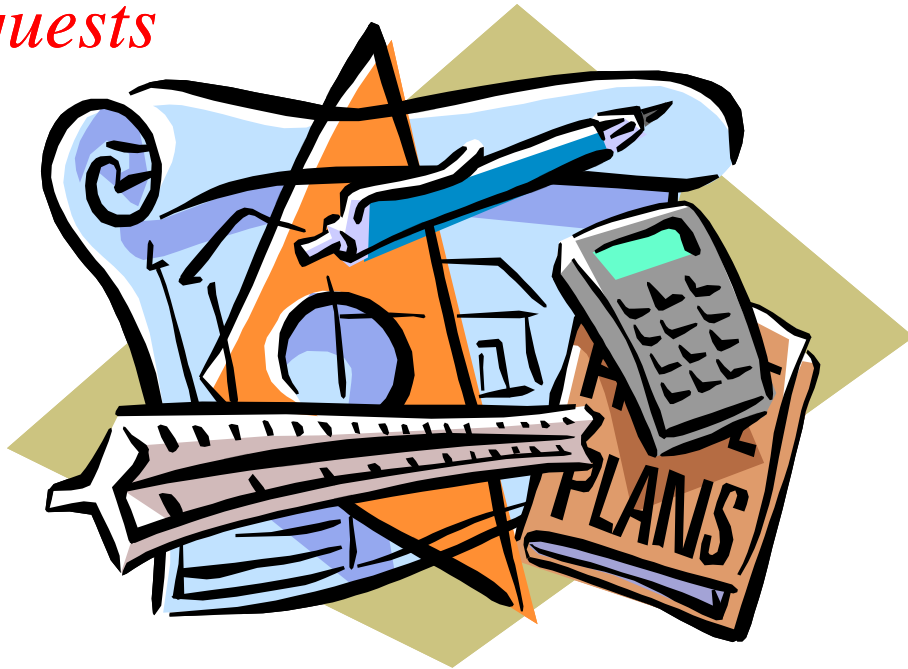
** Amended in 2001*

*** To be completed before the CTP is adopted*

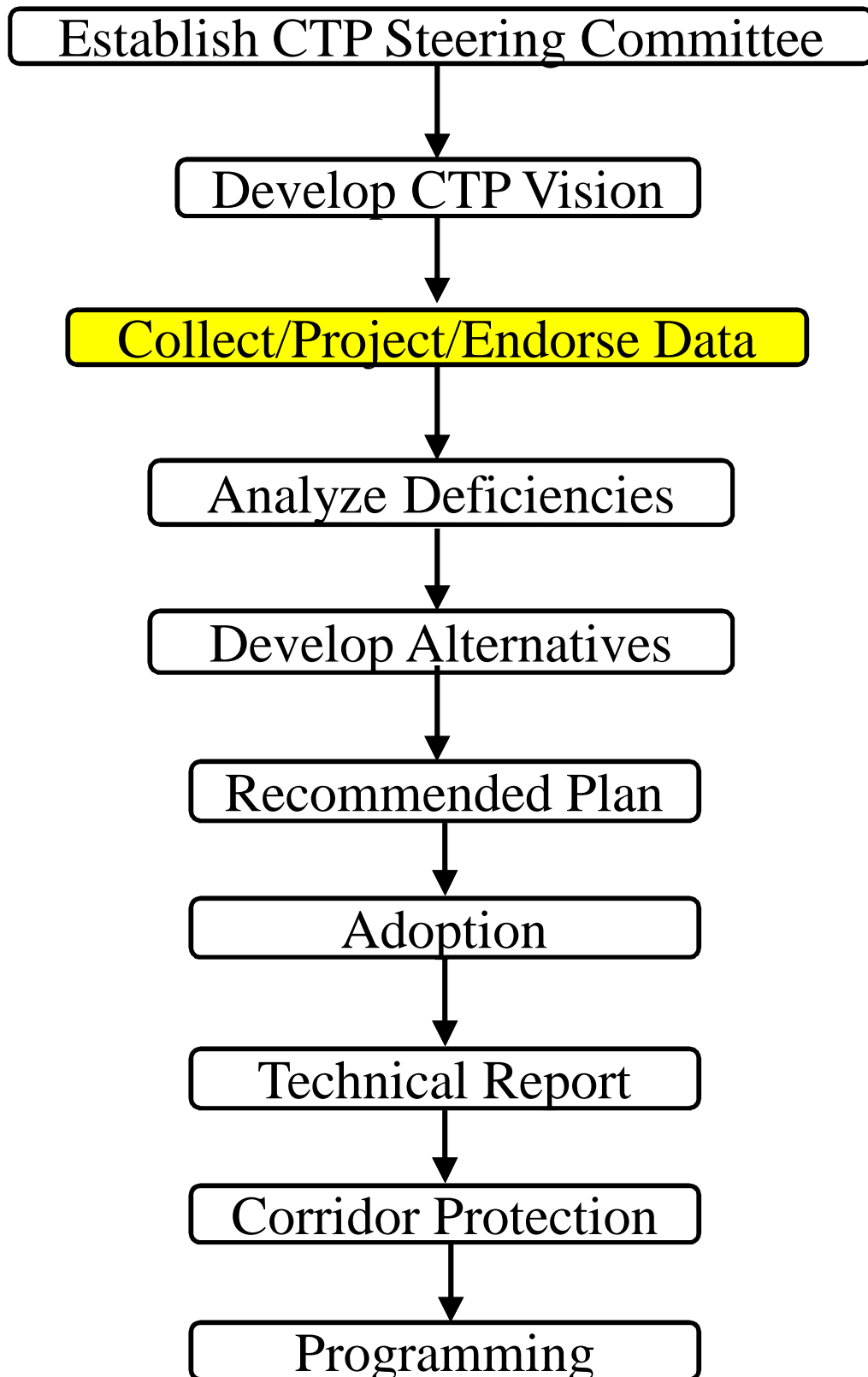


Plan Implementation

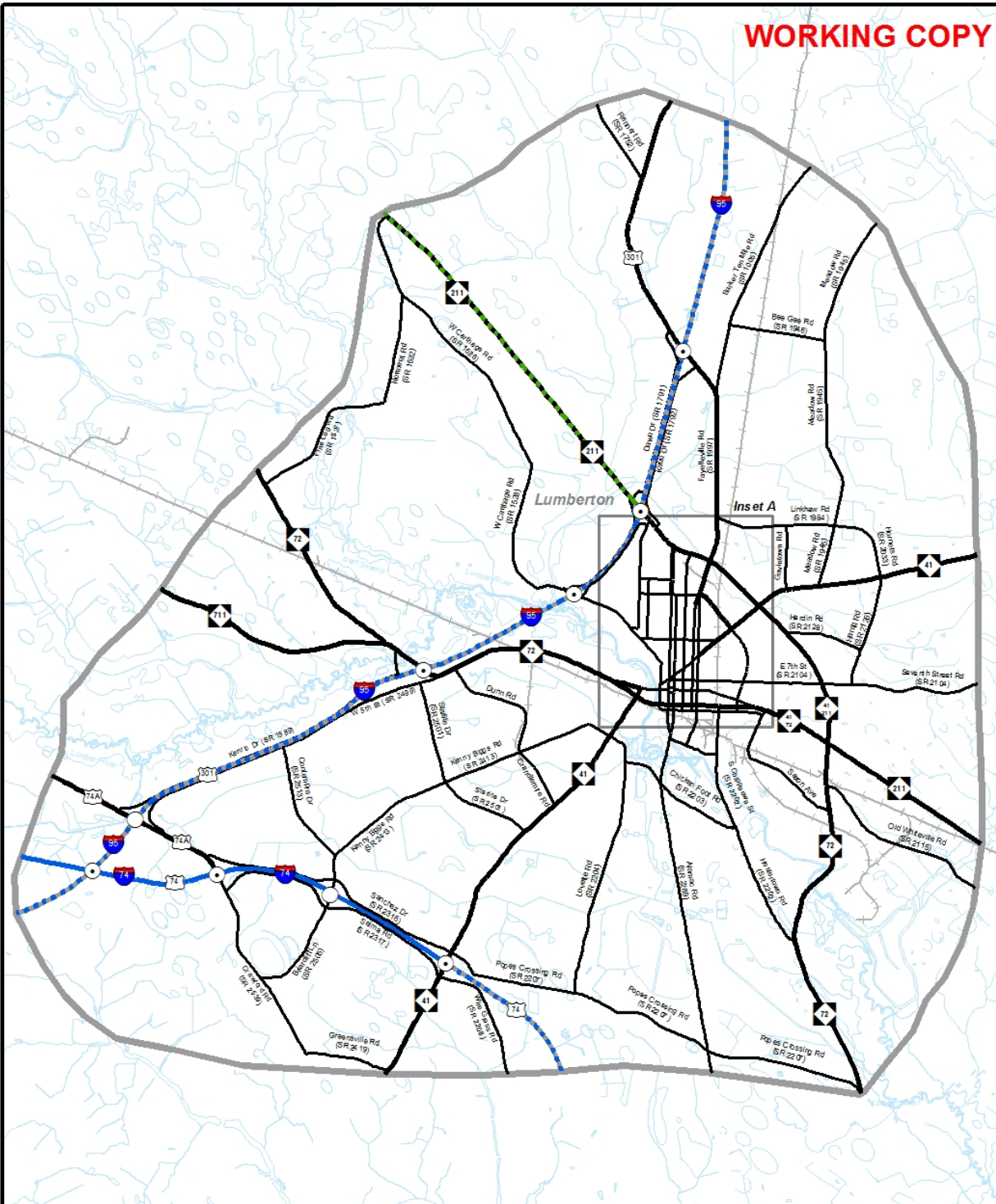
- *Coordinated Subdivision and Land Use Controls*
- *Development Reviews*
- *Utilization of Purpose and Need Statements for Project Development*
- *Project Prioritization for TIP Funding Requests*



Where Are We in the Process?



WORKING COPY



<p>Freeways</p> <ul style="list-style-type: none"> Existing Needs Improvement Recommended <p>Expressways</p> <ul style="list-style-type: none"> Existing Needs Improvement Recommended <p>Boulevards</p> <ul style="list-style-type: none"> Existing Needs Improvement Recommended 	<p>Other Major Thoroughfares</p> <ul style="list-style-type: none"> Existing Needs Improvement Recommended <p>Minor Thoroughfares</p> <ul style="list-style-type: none"> Existing Needs Improvement Recommended <p> <ul style="list-style-type: none"> Existing Interchange Proposed Interchange Interchange Needs Improvement Existing Grade Separation Proposed Grade Separation </p>
---	---

0 0.25 0.5 1 1.5 Miles

Sheet 2 of 5

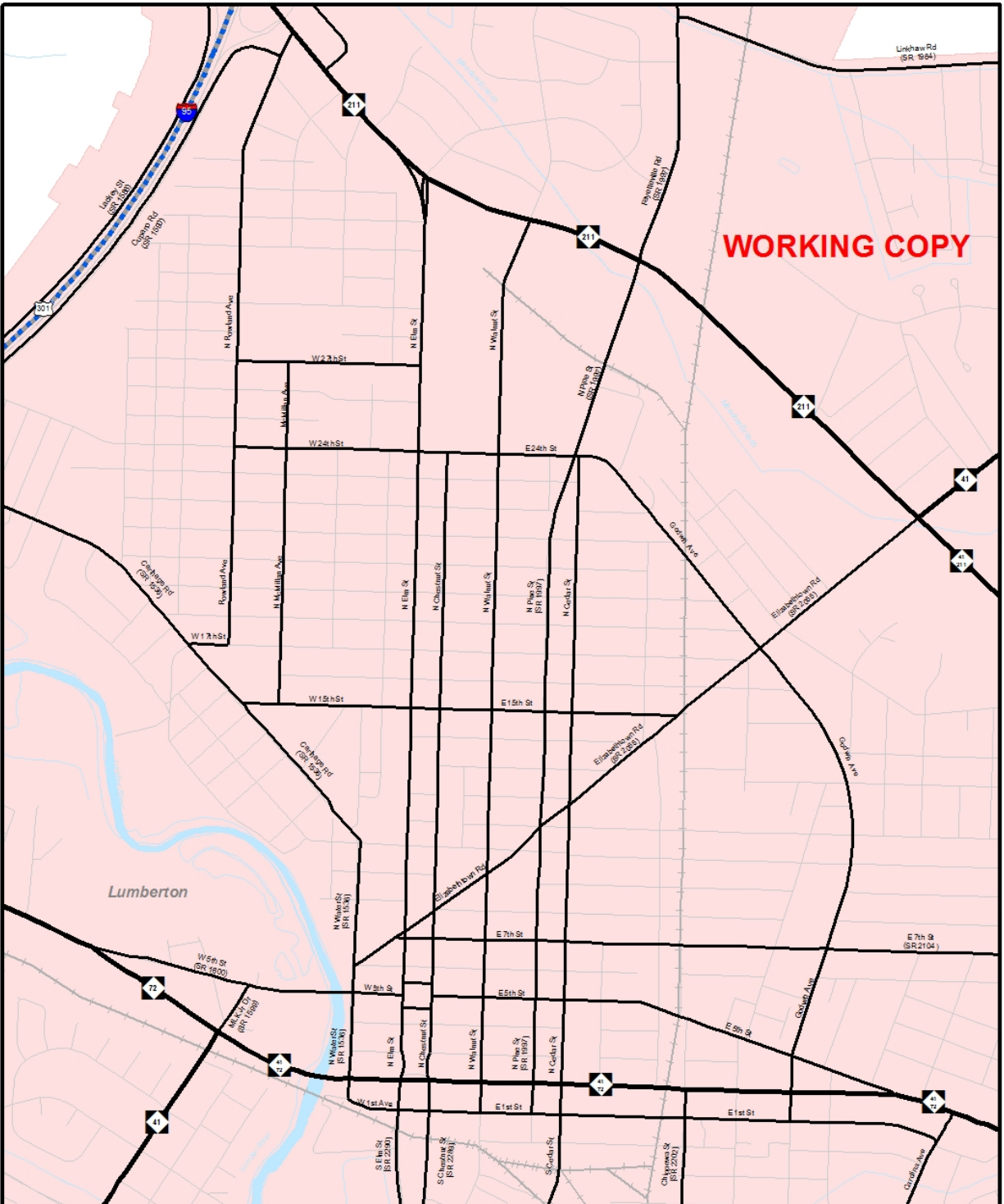
Base map date:

Refer to CTP document for more details

Highway Map

Lumberton
Comprehensive
Transportation Plan

Plan date:



WORKING COPY

<p>Freeways</p> <ul style="list-style-type: none"> Existing Needs Improvement Recommended <p>Expressways</p> <ul style="list-style-type: none"> Existing Needs Improvement Recommended <p>Boulevards</p> <ul style="list-style-type: none"> Existing Needs Improvement Recommended 	<p>Other Major Thoroughfares</p> <ul style="list-style-type: none"> Existing Needs Improvement Recommended <p>Minor Thoroughfares</p> <ul style="list-style-type: none"> Existing Needs Improvement Recommended <p> <ul style="list-style-type: none"> Existing Interchange Proposed Interchange Interchange Needs Improvement Existing Grade Separation Proposed Grade Separation </p>
---	---

0 0.15 0.3 Miles

Sheet 2A of 5

Base map date:

Refer to CTP document for more details

Highway Map

Lumberton
Comprehensive
Transportation Plan

Plan date:

2014 Population and Employment Estimates

2014 POPULATION

- *21,657 within Lumberton City Limits*
- *35,661 within the Lumberton CTP Planning Area*

2014 EMPLOYMENT

- *20,255 total employment in Lumberton CTP Planning Area*
- *Employment Sectors (based on NAICS and Travel Demand Model Classifications):*
 - *21% Industrial*
 - *12% Retail*
 - *13% High-Traffic Retail*
 - *34% Service (includes medical)*
 - *20% Office*

2040 Population and Employment Projections

2040 POPULATION PROJECTIONS

🌀 *41,662 within the Lumberton CTP Planning Area (increase of 6,001 or about 0.6% per year)*

2040 EMPLOYMENT PROJECTIONS

🌀 *23,789 total employment in Lumberton CTP Planning Area (increase of 3,534 or about 0.61% per year)*

🌀 *Greatest employment increase in the service (+1,926) and industrial (+734) sectors*

🌀 *Moderate growth in the high-traffic retail (+472) sectors*

🌀 *Slower growth in the retail (+219) and office (+183) sectors*

2040 Population and Employment Projections

🌀 *Lumberton CTP Steering Committee approved these population and employment projections and have recommended that the Lumberton City Council endorse these projections as control totals for the Lumberton CTP study.*

🌀 *Action Item: Endorsement of the Lumberton CTP Population and Employment Projection Control Totals*

Future Questions or Concerns?

Contact: John A. (Andy) Bailey, Project Engineer
by phone: (919) 707-0991
or email: jabailey@ncdot.gov

Wayne C. Davis, PhD, PE, Triad Supervisor
by phone: (919) 707-0987
or email: wcdavis@ncdot.gov

or write: NCDOT - Transportation Planning Branch
1554 Mail Service Center
Raleigh, NC 27699-1554

Janet Robertson, Lumber River RPO
by phone: (910) 272-5049
or email: jfr@lrcog.org

or write: Lumber River Rural Planning Organization
30 CJ Walker Road
Pembroke, NC 28372



TRANSPORTATION PLANNING BRANCH